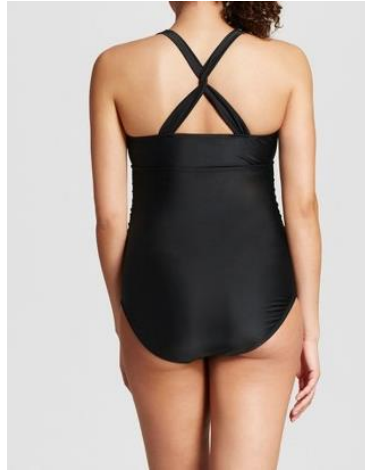


Acceptable Swim Wear for Females - MUST be a one-piece suit! Lower back should be completely covered.



Acceptable Swim Wear for Males – Swim Trunks.. No SPEEDOS will be permitted.



## Appropriate Hair for Uniform Days



Inappropriate hair for Uniform Days – Keep in mind that bulky hair can be difficult to style or put in a bun.



❑ Hair not properly secured



❑ Unbalanced or lopsided hairstyle

## New US army uniform

Alternative combat uniform designed to fit females better



One soldier in six is female in US army

Shoulder width narrowed allowing greater freedom of movement

Sleeve length and width reduced

Longer length jacket front and back

Repositioned knee patch pouches and pockets on lower leg

Insignia moved above the breast

Elbow pouches and sleeve pockets repositioned

Cut of the material adjusted to conform to a woman's hips, chest and waist size

Hip to waist ratio adjusted slightly for a more tapered waist and spacious seat

Elastic waistband replaces drawstring at waist



Source: US Army

ACU worn with the Patrol Cap

Moisture wicking tan T-shirt

Mandarin collar worn in the down position

Velcro backed U.S. ARMY and last name tape

Elbow pouch with Velcro closure for internal elbow pad inserts

Zippered front closure, reinforced with Velcro which provides a smooth surface when worn with the OTV

Knee pouch with Velcro closure for internal knee pad inserts

Leg cuff with front closure tie which allows more comfortable closure on the outside of the boot collar

